

Koshi

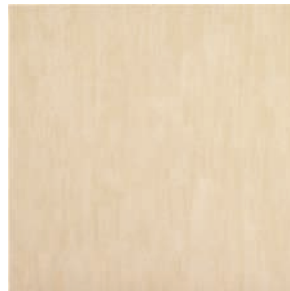
Koshi



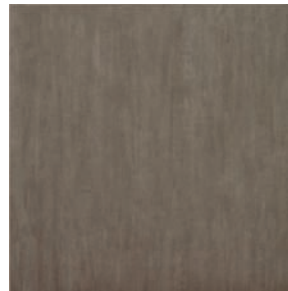
Koshi is a full-body porcelain that offers a modern, fresh look. With an eight-color palette in 12 x 12 and 12 x 24 it is the ideal choice for commercial or residential applications.



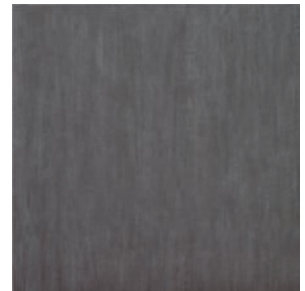
ALMOND



BEIGE



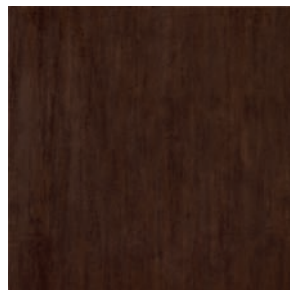
CEMENTE



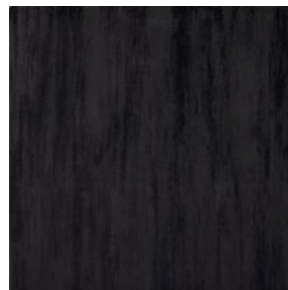
DARK GREY



LIGHT GREY



TOBACCO



NERO



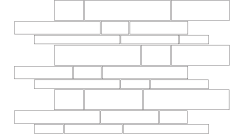
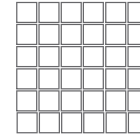
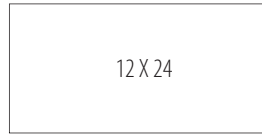
WHITE

Colors are intended as a guide only and may vary from actual tile. Please check tile samples before making final selections. See reverse side for product information.

PRODUCT INFORMATION

*Sizes

- 12 x 12 IAKI--/1212 (8.5 mm thick)
- 12 x 24 IAKI--/1224 (9.2 mm thick)
- 2 x 2 Mosaic IAKI--/22
- Modular Mosaic IAKI--/MM (8.5 mm thick)



2 X 2 Mosaic

Modular Mosaic

Colors

- IAKIAD Almond
- IAKIBE Beige
- IAKICE Cemente (Green/Grey)
- IAKIDG Dark Grey
- IAKILG Light Grey
- IAKINO Nero
- IAKITO Tobacco (Brown)
- IAKIWE White

* When installing patterns please note that field sizes and mosaics are different thicknesses. The thickness difference can usually be worked out by the installer.

Modular Mosaic Colors

- IAKIADBE/MM Almond & Beige Blend
- IAKILGWE/MM Light Grey & White Blend
- IAKICE/MM Cemente

Trim

- IAKI--/SBN 4 x 12 Surface Bullnose
- The Surface Bullnose is made from field tile that is cut, ground and then reglazed.

Coordinating Trim

Available in **Almond (AD) • Beige (BE) • Cemente (CE) Light Grey (LG) • White (WE)**

Expect variation in color and size between field and trims.

- IAKI--/A112 12" Quarter Round
- IAKI--/AC112 Beak
- IAKI--/C112 Finger Cove

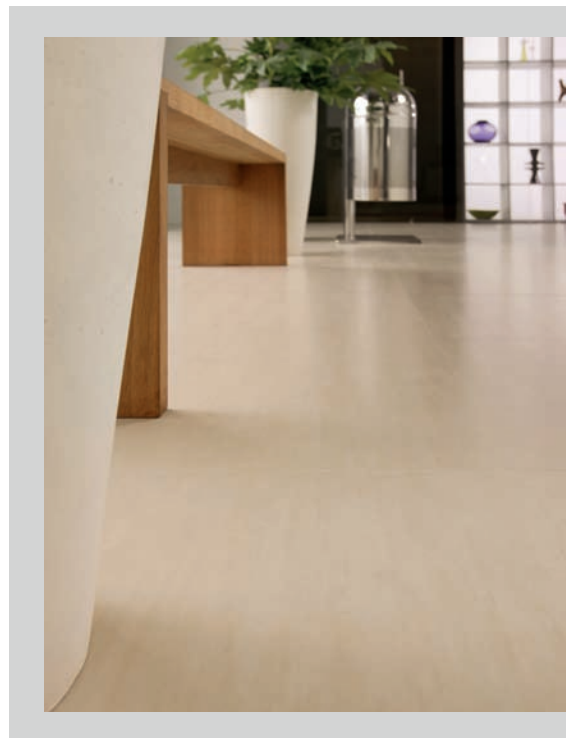
Non-Stock *Sizes & Trim

Available in the above colors - subject to minimum order quantities.

- 18 x 18 IAKI--/1818 (9.5 mm thick)
- 12 x 24 Rectified IAKI--R/1224 (9.2 mm thick)
- 24 x 24 Rectified IAKI--R/2424 (10.5 mm thick)

Trim

- IAKI--/SBN418 4 x 18 Surface Bullnose
- IAKI--R/SBN424 4 x 24 Surface Bullnose



Physical Characteristics

Coefficient of Friction	
ASTM C1028	Wet ≥ 0.60 Dry ≥ 0.60

49% Recycled Ceramic Content
Pre-consumer

This product can be used to earn
LEED MR credits 4.1 and 4.2



The Coefficient of Friction is a general guide only. Testing may vary with different production runs and with different testing labs. As noted in the American with Disabilities Act (ADA) the coefficient of friction varies considerably due to facts not under the control of entities such as the manufacturers and distributors. These factors include, but are not limited to, contaminants, slope of terrain, drainage conditions, adjacent surfaces, etc. Suitability for any installation can only be determined by a site examination of all conditions that could affect the slip resistance of the tile being installed. Continual cleaning and maintenance must be performed once the tile has been installed. For more information see our current handout *Americans with Disabilities Act and Slip Resistance of Tile*.